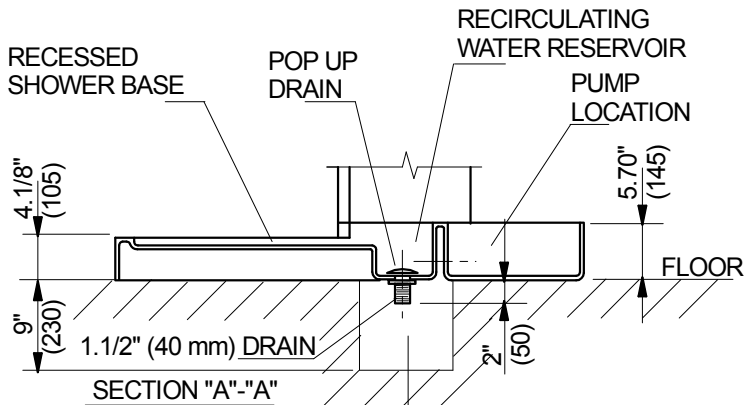
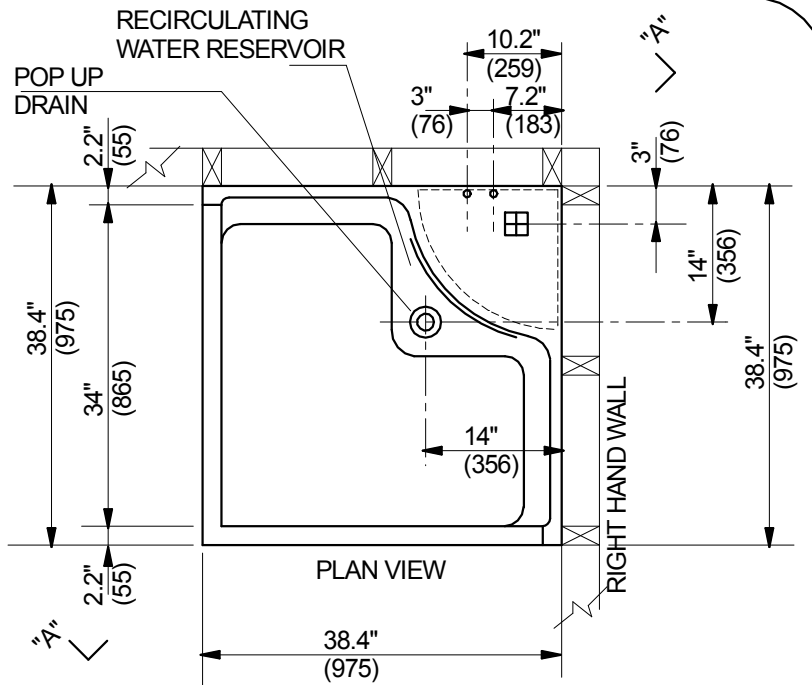


SHOWER BASE & WALL ASSEMBLY JOINT

TYPICAL SCREEN STYLE (SCREEN NOT SUPPLIED)

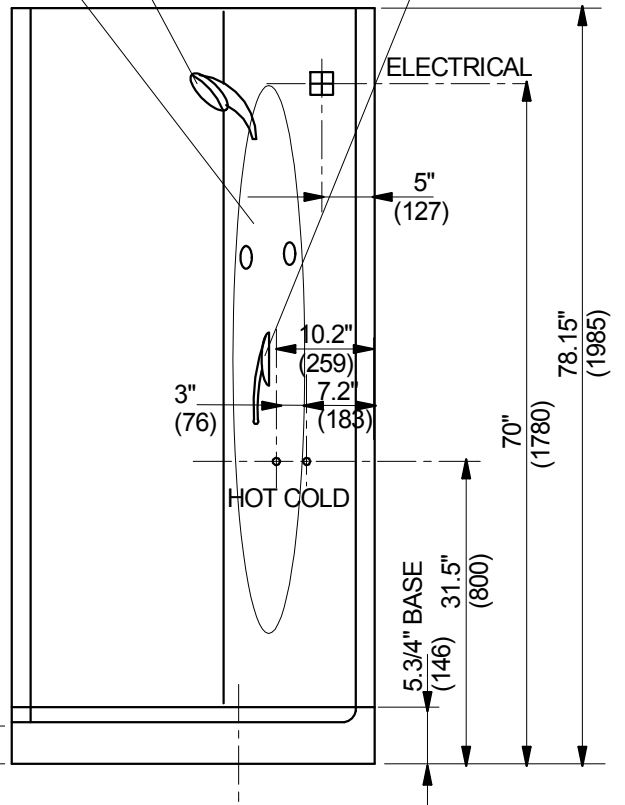


SECTION "A"- "A"



PLAN VIEW

REMOVABLE ACCESS PANEL SHOWER HEAD ON/OFF MIXER



IMPORTANT:
ALLOW ACCESS TO CONNECT DRAIN / TRAP APPROX 230mm(9") BELOW FLOOR LEVEL. LESS IF LOW PROFILE TRAP IS USED. YOUR ARM MUST BE ABLE TO REACH UNDER SHOWER BASE TO THE DRAIN OUTLET TO ENABLE CONNECTION TO THE DRAIN.

SERVICES:

◆ 1/2" (15) HOT & COLD WATER CONNECTIONS 350-950 kpa (50-100PSI) MAX ON LEFT HAND WALL

○ DRAIN CONNECTION 40mm (1.1/2") TRAPPED DRAIN REQUIRED

STANDARD SPECIFICATION:

⊞ ELECTRICAL 220/240 Volt 50/60 Hz 20 amp DEDICATED LINE PROTECTED BY EARTH LEAKAGE CIRCUIT BREAKER WITH MAX TRIP RATING OF 30 Milliamp (CLASS "A" GFC1) ELECTRICAL CONNECTION TO BE ON RIGHT HAND WALL

BOOST SPECIFICATION: OPTION

220 / 240 Volt. 50 / 60Hz. 30Amp DEDICATED LINE AS PER ABOVE.

QUENCH SHOWER FLOOR PLAN MODEL - Q1

SEAFORD VICTORIA AUSTRALIA

ph: (03)9786 7887 www.quenchshowers.com

ALL DIMENSIONS SHOWN ARE INCHES & MILLIMETRES